

10 TOP PRIORITIES FOR TALUNGA PARK

1. NEW CARAVAN PARK FACILITIES

A new Plan has been prepared for the development of the Caravan Park. This will become a key tourist destination for campers, cyclists and visitors to the region and has been prioritised for improvement in the near future.

2. REPAIRS TO THE SHEEP PAVILION

Major repairs to be costed as part of the phased implementation.

3. ENVIRONMENTAL AND SITE INFRASTRUCTURE IMPROVEMENTS

Improve the functionality of Talunga Park by staged improvements to drainage and other site services and civil infrastructure. This includes: surface water treatment, guttering and other environmental improvements. Improvements to landscape may include revegetation to the creek line, pruning and removing unhealthy trees, adding water sensitive urban design infrastructure, formalising car parking spaces and pathway access throughout and beyond.

4. EQUESTRIAN INFRASTRUCTURE

Support and promote the increased use of the Park for multiple equestrian disciplines to attract state wide and interstate participation and events (to include use of the oval, provision of on-site temporary, reusable horse stabling, improved amenity for watering, veterinary purposes, float parking etc)

5. OVAL INFRASTRUCTURE

Support and promote to facilitate sport including: Australian Rules Football competition and practice to a level of service commensurate with use.

6. ADD AMENITY TO THE PLAYSPACE

Improve natural shade/shelters, BBQs, picnic furniture and add new landscaping to enhance the playspace and encourage increased use by the local community and visitors.

7. CREATE A NEW “ADDRESS” AND MAIN ENTRY

Close the existing entry off Melrose Street to cars. Create a new, welcoming primary “address” for Talunga Park at a safer location further East that includes new trees, gates, bollards and signage.

8. A NEW SHARED-USE ADMINISTRATION AND CATERING FACILITY

Develop a new integrated, shared-use administration and catering building that is central to the community hub/ park and supports the ongoing site activities and events. Improve the forecourt area adjacent that takes in the Show Hall and Sheep Pavilion.

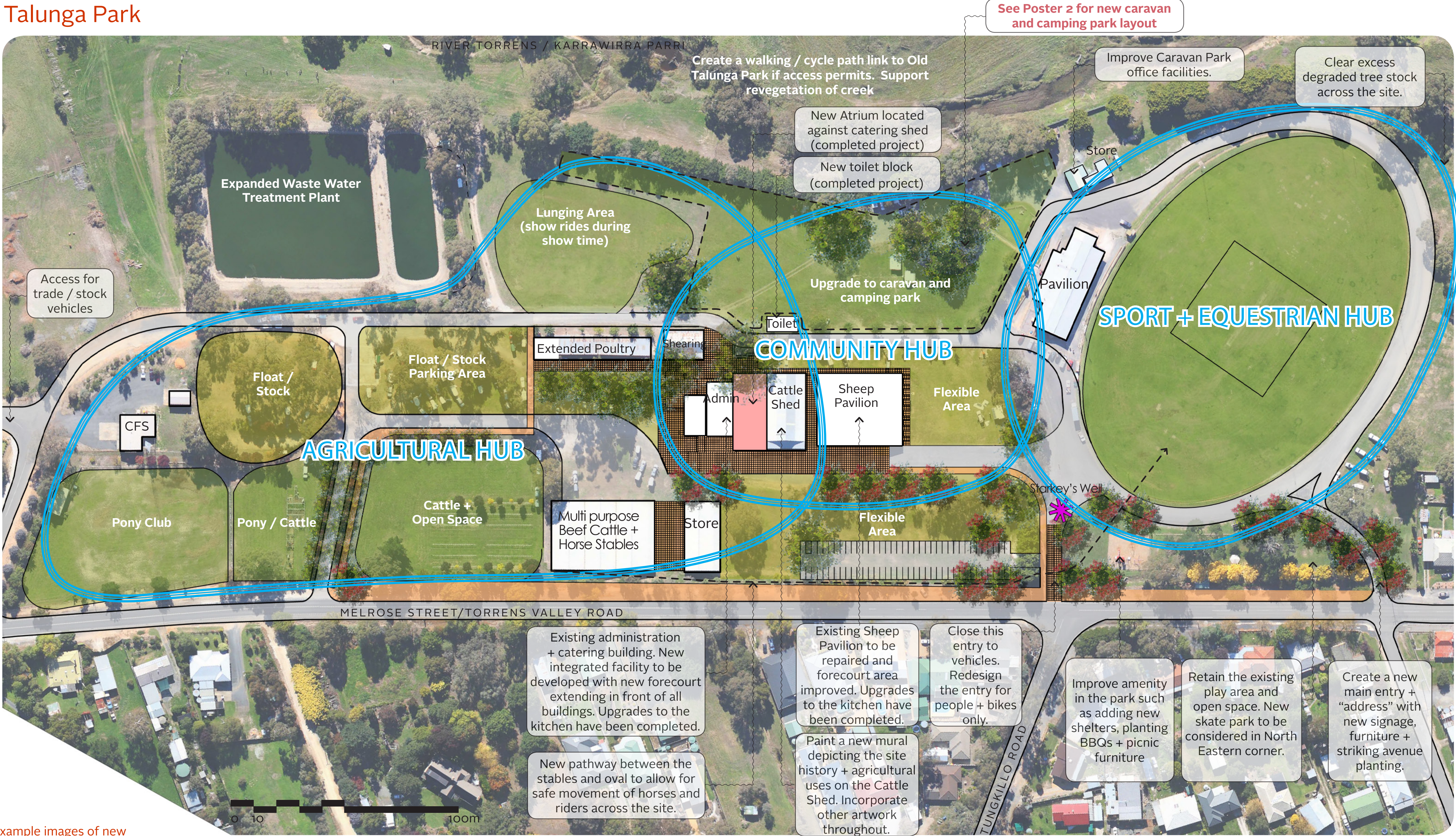
9. NEW SIGNAGE, PLANTING AND FURNITURE

Improve the visitor experience to Talunga Park by adding new furniture (potentially made by the Men’s Shed), new trees and shrubs and information/directional signage throughout.

10. NEW ARTWORKS AND MURAL

Introduce artwork to the site, primarily by the creation of a large mural on the Cattle Shed wall. This can tell the story of Talunga Park, the people and History and be an interesting talking point in the Town.

Talunga Park



Example images of new improvements to Talunga Park



See Poster 2 for new caravan and camping park layout

In 2014, the Barossa Council commissioned the preparation of a strategic Masterplan for Talunga Park in Mount Pleasant to guide future improvement of this important agricultural and community space for the benefit of local residents and visitors.

Some of the recommendations detailed within the 2014 Masterplan have already been delivered and so the following Plans have been prepared to depict these changes and identify the future stages in the Site's development. The Plan will be used to:

- _ provide a long-term Vision for Talunga and Old Talunga Park
- _ inform decision-making regarding physical infrastructure and community assets
- _ assist in prioritising future investment and guide sustainable development
- _ help to identify future partnerships to deliver the work.

5 TOP PRIORITIES FOR OLD TALUNGA PARK

1. IMPROVE TENNIS COURTS

Continue to replace/repair the remaining tennis courts to promote and increase use into the future and support the reintroduction of other sports such as netball onto the site.

2. A NEW TENNIS CLUB BUILDING

A new building is required to replace the existing dilapidated clubroom. It should include change facilities and toilets as well as provide a meeting place for the club that is inviting and promotes the sport within the Town.

3. IMPROVE AMENITY

Improve the visitor experience throughout the Park by adding new furniture and picnic facilities, outdoor exercise and play equipment and landscaping.

4. IMPROVE ACCESSIBILITY

Improve walking and cycling links through the Park and create a link to Talunga Park if access permits. Create an entrance statement off Talunga Park Rd.

5. FORMALISE CAR PARKING

Formalise car parking on the Site to make it safer and more functional. This may include compacted gravel surfacing, wheel-stops and bollards.



Example images of new improvements to Old Talunga Park



PROPOSED NEW TALUNGA PARK CARAVAN AND CAMPING PARK LAYOUT

THE OVERALL VISION FOR TALUNGA AND OLD TALUNGA PARK

The Overall Vision was developed in consultation with multiple stakeholder and community groups and captures the essence of the Talunga Park Masterplan.

A VIBRANT SPORTING, EVENT AND COMMUNITY HUB FOR PEOPLE VISITING, WORKING AND LIVING IN MT PLEASANT AND SURROUNDS

Talunga Park, a picturesque sporting and event hub site located close to the heart of scenic Mt Pleasant is a community and visitor hub. It hosts a range of local and regional sporting competitions and is the home of the annual Mt Pleasant District Show and the popular Mt Pleasant Farmers Market as well as being home to several local and district community groups.

A GREEN AND WELCOMING SPACE TO STAY, EXPLORE AND SAVOUR THE UNSPOILT EXPANSES OF MOUNT PLEASANT, THE HILLS AND BEYOND.

The park is an enjoyable, functional and attractive place to stay, with upgraded facilities for camping. The caravan and camping park setting is unique and beautiful and provides an excellent base to explore the region.

DISTINCTLY RURAL IN LOOK, FEEL AND FUNCTION

The park and its buildings are informal and rural in character; they reflect the agricultural focus of the District. The park spaces host a diverse range of events that continue to put Mt Pleasant on the map. The large range of events and functions means that people can enjoy a range of sporting and other community functions in one location.

ACCESSIBLE AND SAFE

The site is very accessible to both visitors and locals, and allows families, children, older people and stock to easily and safely wander around the extensive grounds.

CONNECTED TO OTHER ENJOYABLE PLACES

The park is well linked to Mt Pleasant and Old Talunga Park by the main road and along the river.

SUSTAINABLE

The park setting, adjacent to the upper reaches of the River Torrens, reminds us of the importance of using natural resources wisely. The park uses recycled water, and solar energy to generate some of its power.



Old Talunga Park